



## WHAT IS CHRONIC CARE MANAGEMENT?

Chronic Care Management (CCM) is a new program available to Medicare patients living with more than one chronic condition, such as arthritis, diabetes, depression, or high blood pressure. This new program will provide you with an added level of support between office visits to help you stay as healthy as possible.

Under the guidance of your doctor, a dedicated CareHarmony care coordinator will monitor your day-to-day wellness and assist you with managing your health. Your care coordinator will be available 24/7 to answer questions related to your health or other needs, help coordinate appointments with specialists, assist with medication management, and give you the personal attention you deserve.

## Questions?

Should you have any questions, or if you would like to learn more about our program, please contact us at 845-790-6137 or visit us online at:

[www.care-harmony.com](http://www.care-harmony.com)

Copyright © 2016-2019, CareHarmony, Inc. All rights reserved.



## A Helping Hand for those most in need

Chronic Care Management Program

# Helping You Better Manage Your Chronic Conditions



## HOW YOU BENEFIT FROM CCM?

Chronic Care Management extends your care outside of the four walls of your physician's practice to ensure that you maintain the best possible health.

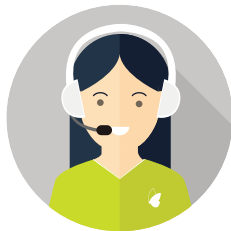
- A dedicated care coordinator that understands your complete medical history
- Access to health care assistance 24/7
- Personalized treatment plan created by your care team
- Help with all of your health care related tasks, such as scheduling appointments, requesting refills, and more
- Help with non-health care related tasks, such as arranging transportation, registration in available community programs, and more.
- Coordination of care between your pharmacy, specialists, testing centers, hospitals, etc.

## SCENARIO: SCHEDULING AN APPOINTMENT WITH A SPECIALIST



**John Bloom**

A 77-year-old patient suffering from diabetes and asthma, living home alone and enrolled in the CCM program by his primary care physician.



**Jane (Care Coordinator)**

A veteran nurse with years of experience in a geriatric setting is matched with John based on his conditions and specific needs.

## WHAT DOES IT COST?

The Chronic Care Management program is typically covered by secondary insurance resulting in no out-of-pocket expense for patients. For those patients not covered by secondary insurance, CCM would, like any other Medicare program, be subject to a modest monthly copay. The standard Medicare annual deductible does apply. If you are unsure about your insurance coverage, please speak directly to your doctor or practice staff.

## OPT OUT ANY TIME

While you can only sign up for Chronic Care Management services with one of your healthcare providers, you are able to opt out any time—there are no strings attached.

### Jane helps John by:

- Scheduling the appointment for John
- Sending John's medical records to the specialist
- Following up with the specialist after the visit to update the treatment plan
- Helping check for drug interactions between John's new and existing medications
- Checking in on John to make sure there are no issues with his new medication and treatment plan



## Signing up is as easy as...

1

### Contact Us Today!

Give us a call at **(629) 888-9202** to learn more about how you can benefit from this program and to gain answers to any questions you may have.

2

### Enroll in the Program

Consent to being a participant in the CCM program. You can only enroll with one provider.

3

### Start feeling better

Upon signing up, your dedicated care coordinator will call you to discuss your health goals and build a treatment plan designed to help you get, and stay, as healthy as possible.

