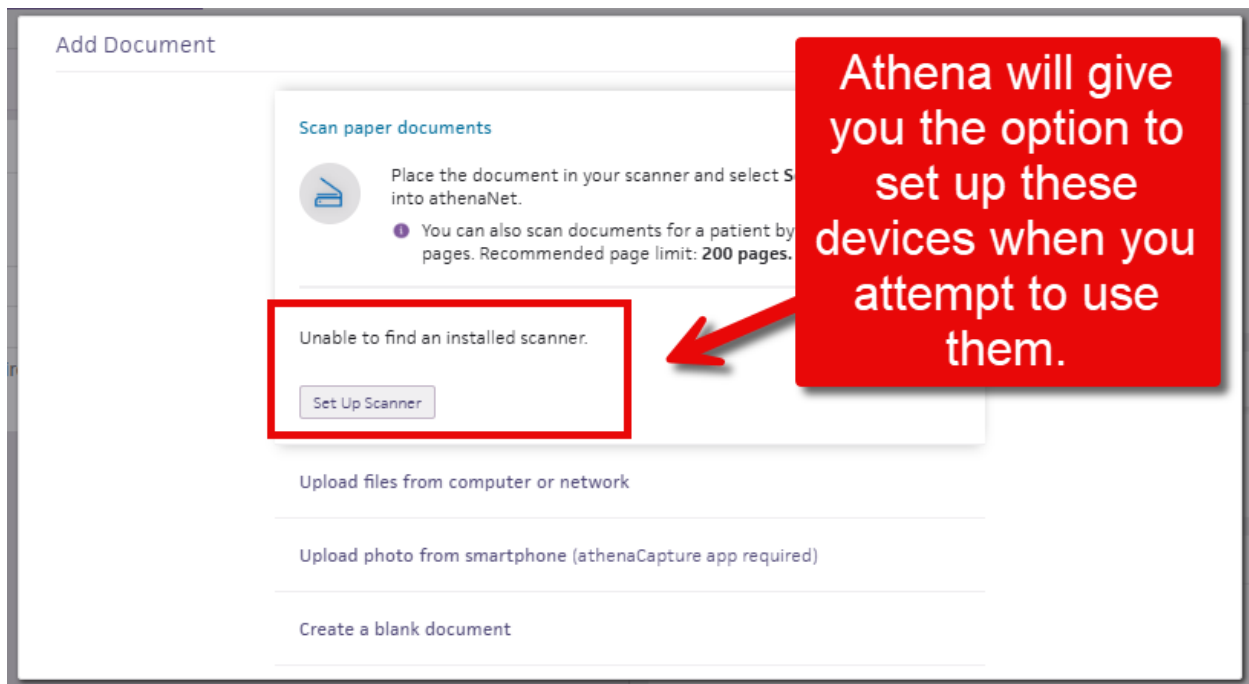


Athena Device Management Modules

1. Athena has Device Management modules that allow it to connect to the following devices:

- **Fujitsu document scanner**
- **DYMO label printer**
- **Ingenico credit card reader**
- **MidMark ECG machine**

While your computer may recognize these devices, they will not function in Athena without these modules installed. Whenever you log into Athena on a new computer, they will need to be installed again. This can be done during your normal workflow.



2. When you attempt to use one of these devices, Athena will indicate that the device needs to be set up, as shown above. Click **Set Up (Scanner, Label Printer, etc.)** and you will be prompted to install the module.

3. Click **Install Module**. After a brief installation, you will immediately be able to use the device.

